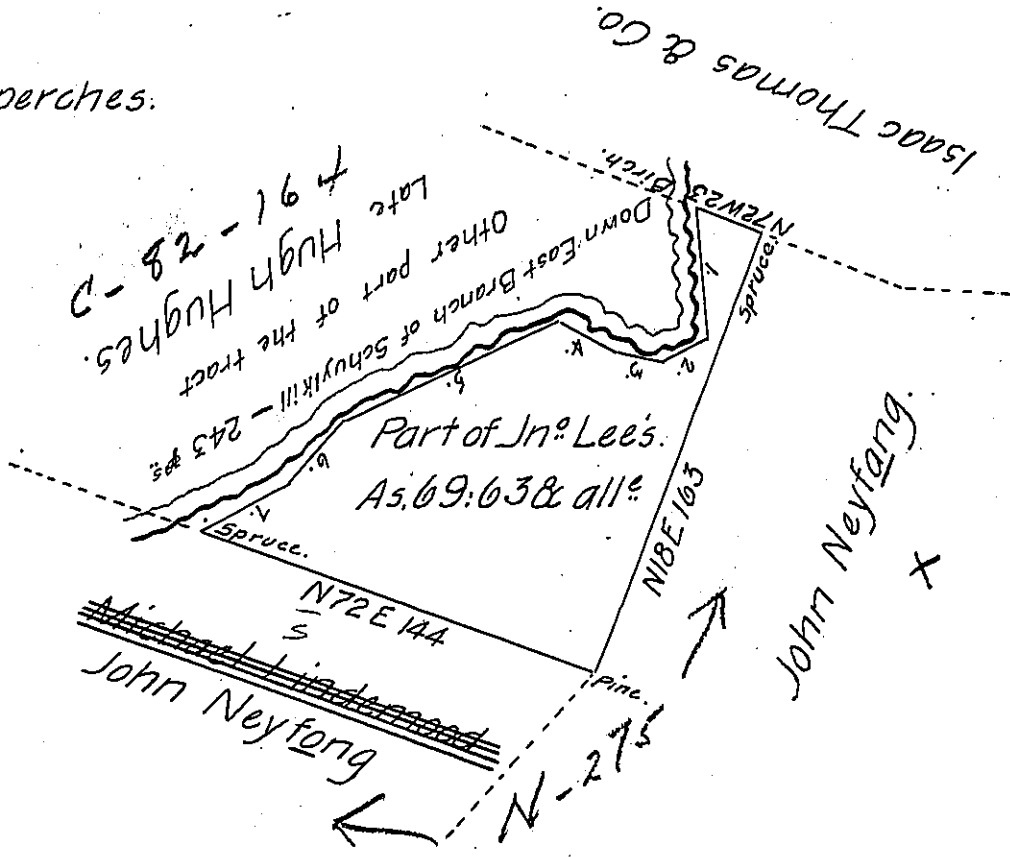


Courses along Schuylkill.-

- 1. S 5 E 46
- 2. S 63 W 16
- 3. N 82 W 15
- 4. N 65 W 22
- 5. S 63 W 80
- 6. S 43 W 40
- 7. S 65 W 24

243 perches.



Situate in Schuylkill Township, Berks County Cont<sup>d</sup> A<sup>s</sup> 69:63 & the allow<sup>ce</sup>

of 6<sup>th</sup> Cont &c [Part of A<sup>s</sup> 199:103 & all<sup>e</sup> Surveyed to John Lee by virtue of an Application N 348 dated the 5 August 1765 Surveyed the above the 24 July 1804 for Frederick Maurer

Henry M. Richards D.S.

To Samuel Cochran Esq<sup>r</sup> }  
Surveyor General }

IN TESTIMONY that the above is a copy of the original remaining on file in the Department of Internal Affairs of Pennsylvania, made conformably to an Act of Assembly approved the 16th day of February, 1833, I have hereunto set my Hand and caused the Seal of said Department to be affixed at Harrisburg, this twentyfourth day of November 1905.

*Grace D. Brown*  
Secretary of Internal Affairs.